

VILLAS 2

DEL MIRABAL

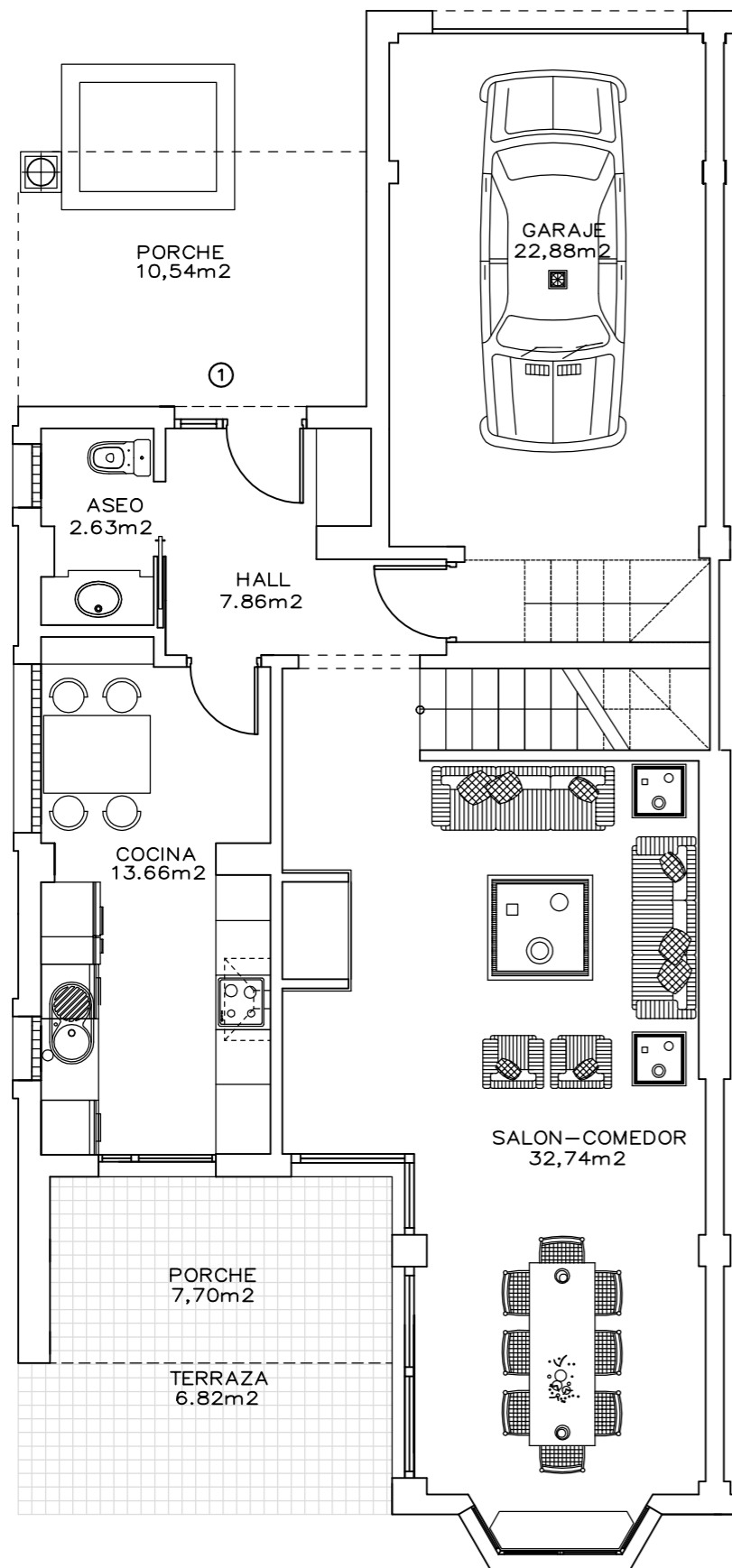
VIVIENDAS UNIFAMILIARES
ADOSADAS

P.PARCIAL "EL PASTEL"

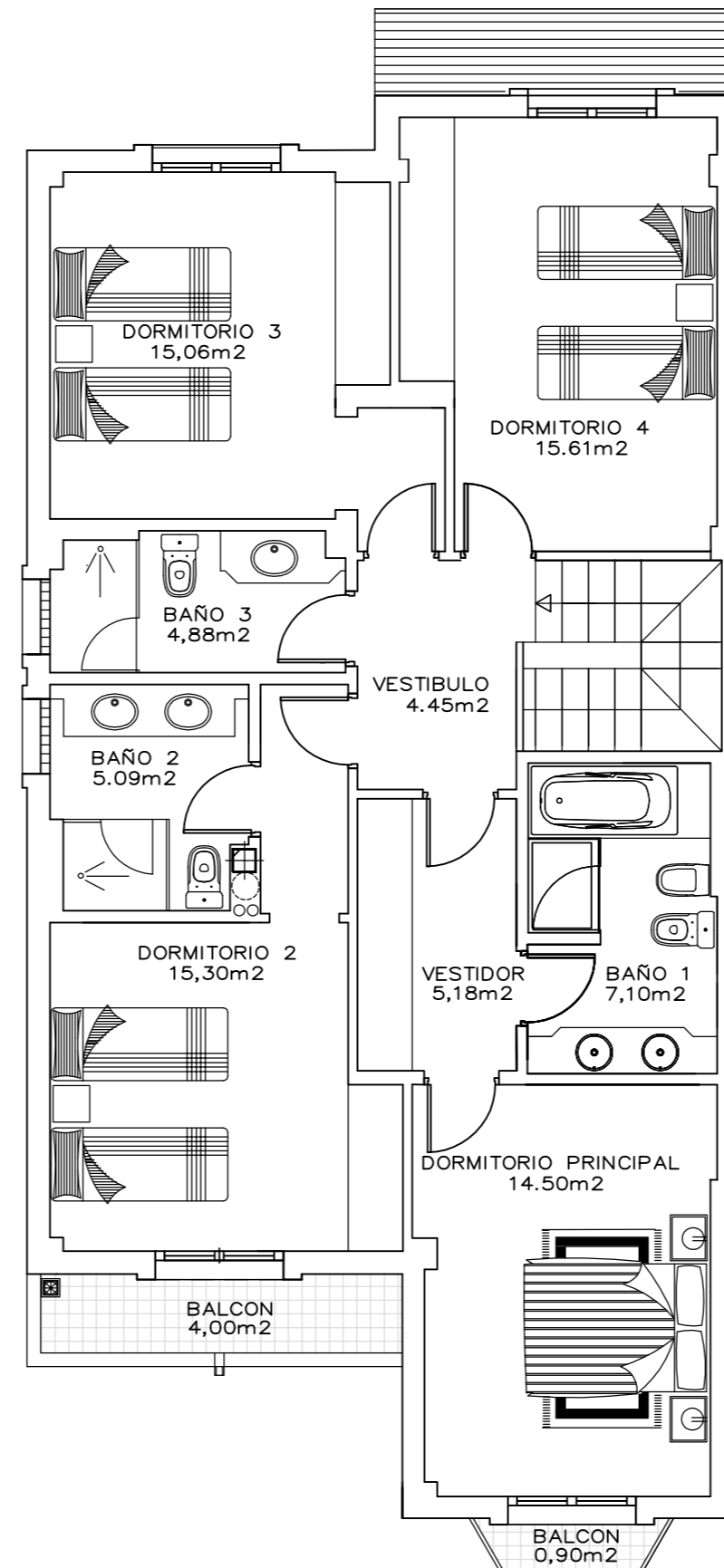
TIPO 1

SUPERFICIE TOTAL CONSTRUIDA: 243,93 m²

ESCALA 1:75



PLANTA BAJA



PLANTA ALTA